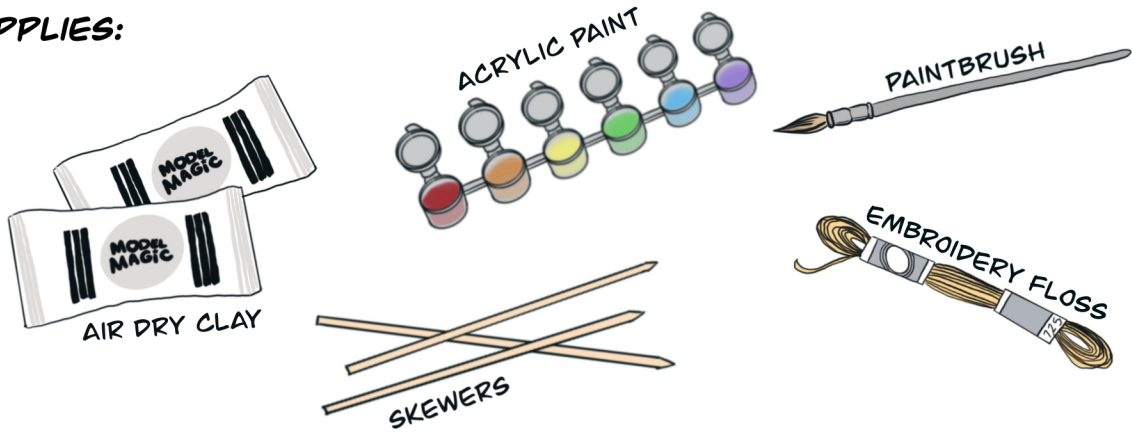


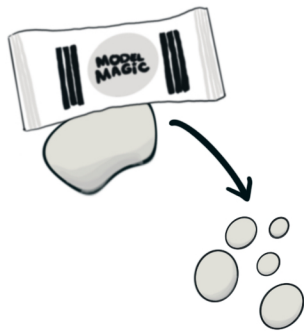
# CLAY BEADS

## SUPPLIES:



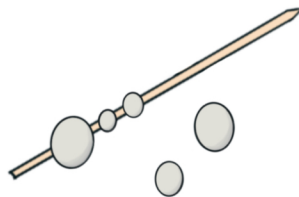
## STEP 1:

ROLL CLAY INTO VARIOUS SIZED BEADS



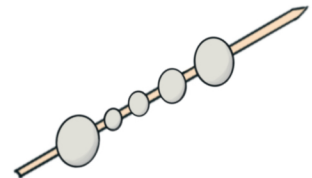
## STEP 2:

CAREFULLY SLIDE BEADS ONTO SKEWER



## STEP 3:

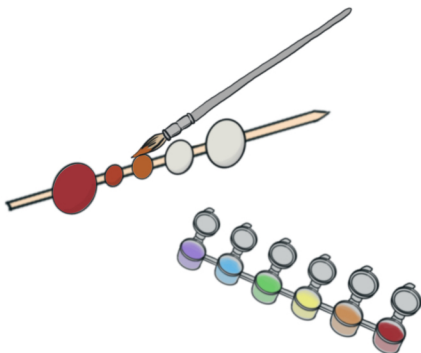
LET BEADS DRY COMPLETELY ON SKEWER



\*MAY TAKE A COUPLE DAYS TO DRY

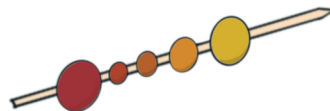
## STEP 4:

ONCE BEADS ARE DRY, PAINT EACH ONE



## STEP 5:

LET PAINT DRY COMPLETELY



\*OPTIONAL:  
USE MOD PODGE  
TO SEAL AND PROTECT BEADS

## STEP 6:

ADD BEADS TO EMBROIDERY FLOSS AND TIE INTO NECKLACE

