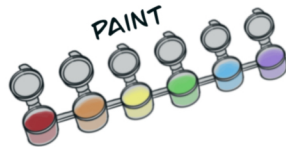


NATURE PRINT TOTE

SUPPLIES:

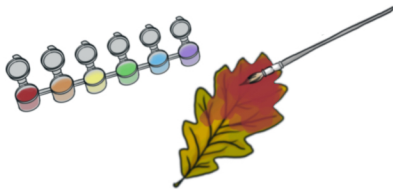


COTTON TOTE



STEP 1:

BRUSH A THIN LAYER OF PAINT
ACROSS THE BACK OF THE LEAF



*THE BACK OF THE LEAF
HAS TEXTURE FROM THE VEINS
THAT WILL PRINT WELL

STEP 2:

CAREFULLY PLACE LEAF,
PAINT SIDE DOWN,
ON TOTE



STEP 3:

GENTLY PLACE SCRAP PAPER
ON TOP OF LEAF
AND PRESS FIRMLY



STEP 4:

CAREFULLY REMOVE
SCRAP PAPER



STEP 5:

SLOWLY PEEL OFF LEAF
REVEALING PRINT



STEP 6:

LET PAINT DRY COMPLETELY
BEFORE USING

